



Your best partner
for embedded
RF design

BITxxRTDK

BITxxRT transceiver Development kit

Program Operation

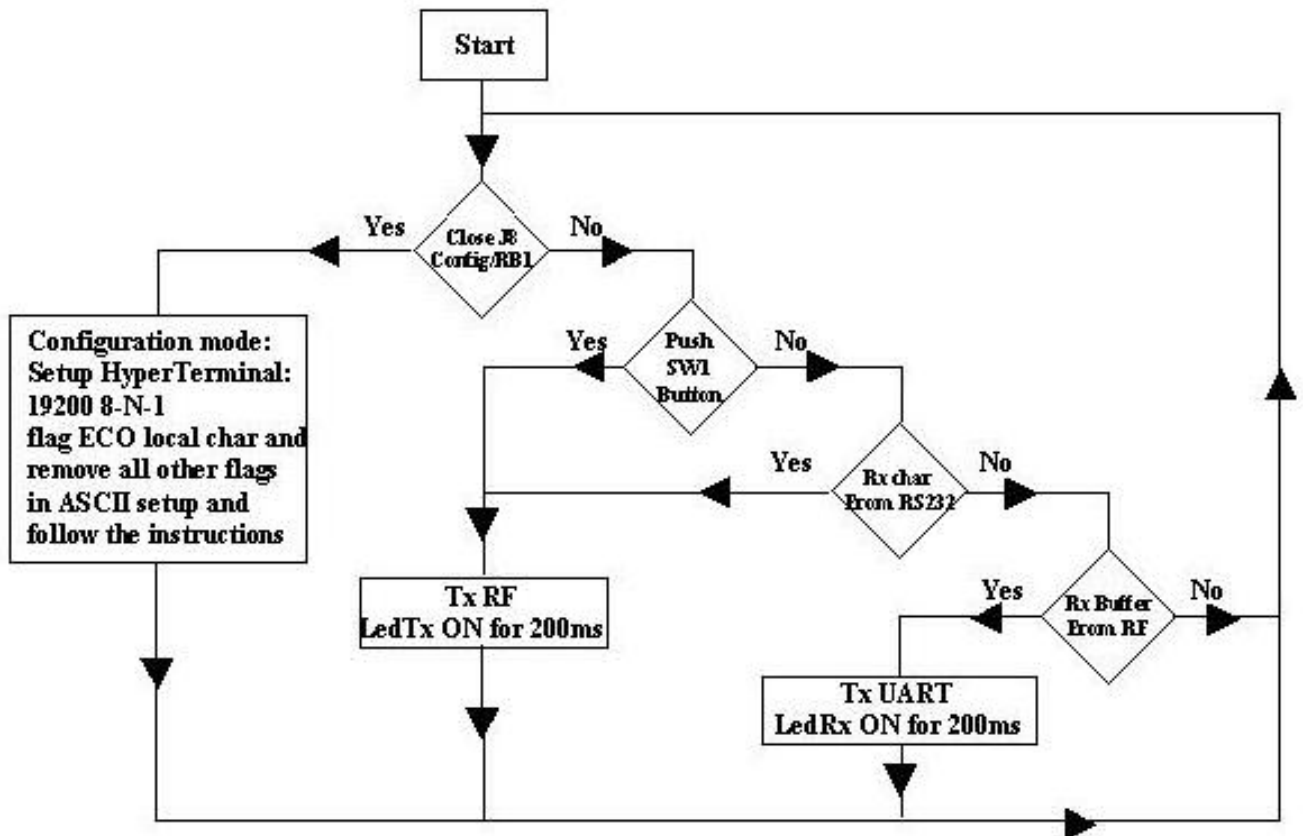
When jumper J8, (config/RB1) is shorted the Microcontroller (Microchip PIC18LF252) which control BITxxRT enter in configuration mode. Now it is possible to change all configuration register (Packet Length Channel, Address, etc.) or return to default.

When button SW1(RB3) is pushed or a char is received from RS232 the microcontroller send a packet to RF and blink LedTx for 200ms.

If Module receive data from RF blink LedRx for 200ms and put receive data on RS232



Program Flow chart



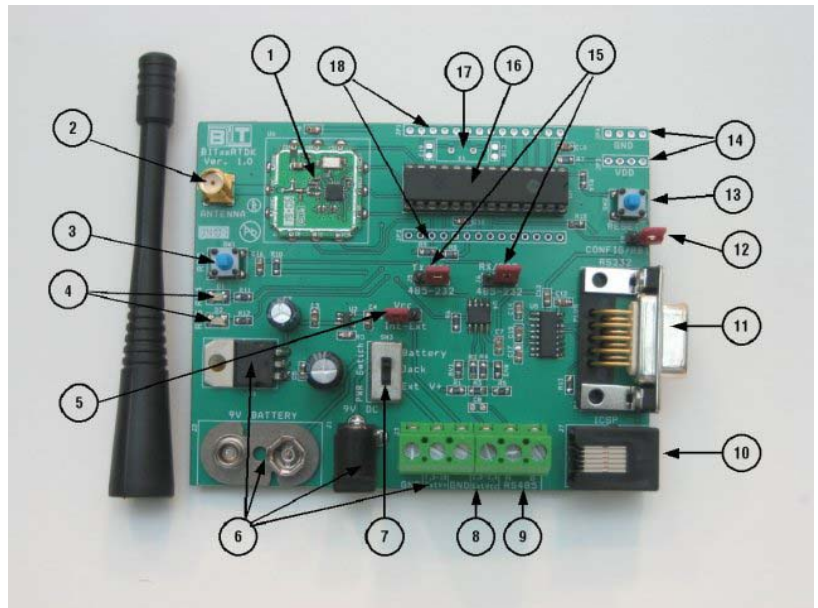
BITxxRTDK Hardware

Board variants:

BIT04RTDK 400.0 - 464.0 MHz
 BIT08RTDK 800.0 - 928.0 MHz
 BIT24RTDK 2400.0 - 2483.5 MHz

BITxxRTDK comes with the following:

- 1- Two Boards
- 2- Two Transceiver
- 3- Two antennas for selected frequency range



The BITxxRT Development Board has the following hardware features:

- 1- Transceiver BITxxRT.
- 2- SMA connector for Antenna.
- 3- Push button switches for external stimulus on pin RB3.
- 4- LED's from RA4/RA5 pins.
- 5- Jumper J4 for select on-board 2.5V regulator or External Vcc 2,0-3,6V regulated DC supply.
- 6- On-board +5V regulator for direct input from 9V 100mA DC wall adapter or 9V battery, or External V+ 7,5-18V unregulated DC supply.
- 7- Power Switch for select input DC supply: Battery, Jack or Ext V+.
- 8- Connection for External Vcc 2,0-3,6V regulated DC supply.
- 9- RS-485 connector and associated hardware for direct connection to an RS-485 bus.
- 10- In-circuit Debugger (Microchip ICD2) and ICSP connector.
- 11- RS-232 socket and associated hardware for direct connection to an RS-232 interface.
- 12- Jumper J8 to connect ground pin Config/RB1 (pull-up 100K).
- 13- Push button switches for Reset.
- 14- Holes for a +2.5V 100mA regulated DC supply.
- 15- Jumper J5/J6 for select RS-232 or RS-485.
- 16- 28-pin DIP socket.
- 17- Unpopulated associated hardware provided for crystal connection.
- 18- Holes to connect any microcontroller pin's to customer application.